

American Seed Trade Association and Bureau of Land Management

October 25, 2011 Webinar



Agenda for ASTA & BLM Webinar

- Welcome and Introductions
- BLM Overview
- National Seed Coordinator Position
- Consolidated Seed Buy
- Budget 2012
- Working Capital Fund
- Ely Seed Warehouse
- Internal BLM Seed Use Survey
- Society for Range Management
- Priorities for FY 2012



BLM Overview

- What is driving our conservation program:
 - Climate Change
 - Rapid Ecoregional Assessments
 - Healthy Landscapes
 - Assessments, Inventory and Monitoring
 - Sage-Grouse
 - Reorganization

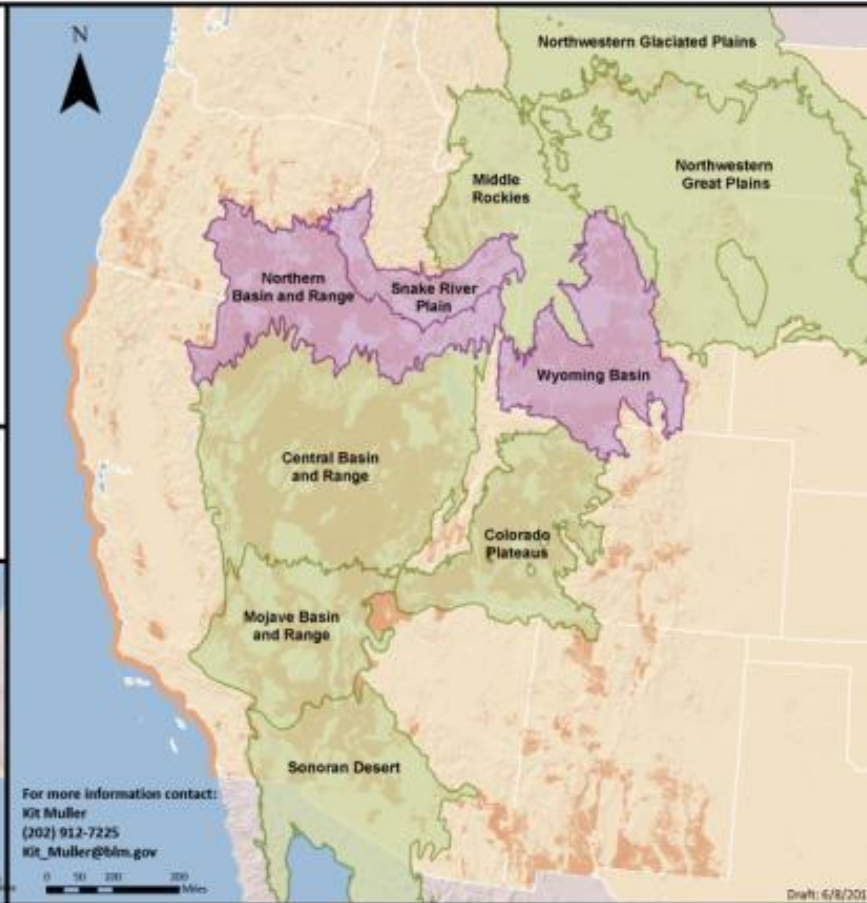


Rapid Ecoregional Assessments: Underway and Proposed



Rapid Ecoregional Assessments

- BLM Lands
- 2010 - Initiated
- 2011 - Proposed



Underway

- 7 in FY 2010
- 3 in FY 2011

Proposed

- 2 in FY 2012
- 1 in FY 2013



Rapid Ecoregional Assessments

What do REAs do?

- Assess status of key ecological values
- Forecast trends
- Identify management opportunities
- Identify data gaps and science needs
- Provide information and tools
- *Do not make decisions or allocations*

REA key points:

- Begin with management questions
- Science based
- Conceptual model
- Provide geospatial information
- Rapid

• Identify, map, and spatially model:

- Conservation elements (CEs)
 - ✦ Native fish and wildlife species CEs
 - ✦ Native, intact vegetation communities CEs
 - ✦ Aquatic and riparian/wetland CEs
- Change agents (CAs)
 - ✦ Wildland fire
 - ✦ Development
 - ✦ Invasive species
 - ✦ Climate change



National Seed Coordinator Position

- Paul Krabacher was selected
- Alaska State Office Botanist
 - Native Plant Materials Development
 - Rapid Ecoregional Assessments
 - Healthy Landscapes
 - Landscape Conservation Cooperatives
- Previous work: State of Colorado Mining and Reclamation
- Reporting Date: November 14, 2011



National Seed Coordinator

- Supervise Management and Operations of BLM Seed Warehouses (Boise and Ely)
- Coordinate the 3-4 Consolidated Seed Buys/Year
- Coordinate work with national BLM Plant Conservation Program Lead and ES& R Program Lead
- Work with Seed Industry



Consolidated Seed Buy

- Late season fires
- Consolidated Seed Buy will be coordinated through ID State Office (Mike De Armond) and NIFC (Ron Smith)
- Seed Need Request
 - To Field Offices: 10 -24 -11
 - Due from Field Offices: 10 -31 -11
 - Solicitation Out: 11 - 8 -11
 - Solicitation Closes 11 -17- 11
- TPEC: ~Thanksgiving
- Awarded 7-8 days after TPEC



Budget 2012

- Continuing Resolution
 - Can spend up to 13.26%
 - Expires November 18, 2011
- Emergency Stabilization and Rehabilitation
- Plant Conservation Program
 - \$4.6 m Wildlife (1110) Subactivity
 - \$3.0 m Climate Change (1010) Subactivity



Working Capital Fund

- The BLM's Working Capital Fund (WCF) is a revolving fund that helps pay for authorized services and goods that support various BLM programs as well as other Interior agencies. The WCF collects user fees and other charges (e.g., a mileage or hourly charge for vehicles and heavy equipment) to fund these services and goods .
- One major benefit of the WCF is that it results in predictable user fees instead of sudden large costs for trucks, heavy equipment, etc. We manage the budget and accounting functions of the WCF programs and work closely with property managers.
- Each WCF program is a self-supporting, non-profit internal business line.



Ely, NV Seed Warehouse



Design Phase:
Completed 9-30-11

Construction Phase:
 Nov – Jan 2012 Procure contract
 Jan - Feb 2012 Award contract
 Mar-Apr 2012 Construction start
 Dec-Apr 2013 Construction end
 Apr-May 2013 Occupancy



BLM Seed Use Survey

- Internal Survey developed
 - Survey going online 10-28-11
- Instructional Memorandum (IM) drafted
 - IM - surname process: 11- 4-11
 - IM to Field Offices: 11-31-11
 - IM due date: 12-31-11
- Analysis and Report 1-31-11



Society for Range Management

- Conference : Jan. 29 - Feb. 3, 2012
- Spokane, WA
- Proposal for Session on Seeding
- Great Basin Native Plant Selection and Increase Project Annual Meeting



NPMDDP Program 2012 Priorities

- Conduct BLM Seed Use Survey
- Establish Interagency NPMDDP Board
- Work with National Seed Coordinator to strengthen BLM relationship with Seed Industry
- Update the NPMDDP Progress Report (2001-2007)
- Plan the 2nd National Native Seed Conference
- Plan & Hold Seeds of Success Partners Meeting (January 2012)
- Increase partnerships in Desert Southwest
- Update Plant Conservation Alliance Framework and move PCA website (including SOS website) to BLM server



ES&R Program 2012 Priorities

- Post Fire Policy – DOI Departmental manual
- Developing criteria for post fire Burned Area Rehabilitation program
- Streamlining Emergency Stabilization and Burned Area Rehabilitation process
- Interagency communication, coordination and data sharing

